

Balcrank®

HEAVY DUTY NON-METERED HANDLE



Automatic Tip	Semi-Auto Tip
3320-022	3320-026*
3320-023	3320-027*
3320-024	3320-028*
3320-025	3320-029*
3320-030 ^L	3320-034 ^{*L}
3320-031 ^L	3320-035 ^{*L}
3320-032 ^L	3320-036 ^{*L}
3320-033 ^L	3320-037 ^{*L}
	3320-038
	3320-039
	3320-040
	3320-041
	3320-042 ^L
	3330-043 ^L

Thoroughly read and understand this manual before installing, operating or servicing this equipment.


3320-035


* w/ High Flow Tip
^L w/ Locking Handle


**OPERATION, INSTALLATION,
MAINTENANCE AND REPAIR GUIDE**


GENERAL SAFETY REQUIREMENTS


NOTE: THOROUGHLY READ AND UNDERSTAND THIS MANUAL BEFORE INSTALLING, OPERATING, OR SERVICING THIS EQUIPMENT.


	IMPORTANT
	<p>Read these safety warnings and instructions in this manual completely, before installation and start-up of the control handle. It is the responsibility of the purchaser to retain this manual for reference. Failure to comply with the recommendations stated in this manual will damage the control handle and void factory warranty.</p>


	WARNING
	<p>Airborne particles and loud noise hazards.</p> <p>Wear ear and eye protection.</p>

	CAUTION
	<p>Models 3320-030 thru 3320-037 contain a trigger that will lock in the open position. DO NOT OPERATE without a Fluid Inventory Control (FIC) system. Improper use of this handle without an FIC system can result in hazardous spills. Distributors will be held responsible for any misuse of the handles with locking triggers.</p>

	WARNING
	<p>Before doing any maintenance on the control handle, be certain all pressure is completely vented from the pump, suction, discharge, piping, and all other openings and connections. Be certain the air supply is locked out or made non-operational, so that it cannot be started while work is being done on the control handle. Be certain that approved eye protection and protective clothing are worn at all times in the vicinity of the control handle. Failure to follow these recommendations may result in serious injury or death.</p>

	CAUTION
<p>Maximum Fluid Pressure 1500 PSI. Under no circumstances should the control handle be aimed at any person or your own body at anytime. Personal injury may result.</p>	

	WARNING
	<p>DANGER: Not for use with fluids that have a flash point below 100°F (38°C). Examples: gasoline, alcohol. Sparking could result in an explosion which could result in death.</p>

	WARNING
	<p>Do not place your hand or fingers over the dispensing nozzle and/or aim the nozzle at a person at any time. Personal injury may result.</p>

PRODUCT DESCRIPTION

Balcrank® Control Handles are used for dispensing automotive lubricants.

The grip is shaped to fit the hand comfortably. The Control Handle is balanced and light weight for reduced operator fatigue.

All models are equipped with either high flow automatic or semi-automatic tips depending on operational needs.

MODELS:

3320-022/3320-026/3320-038

3320-030/3320-034/3320-042 (Locking handle)

Includes Rigid Oil Extension

3320-024/3320-028/3320-040

3320-032/3320-036/ (Locking handle)

Includes Gear Extension

3320-023/3320-027/3320-039

3320-031/3320-035/3320-043 (Locking handle)

Includes Flex Extension

3320-025/3320-029/3320-041

3320-033/3320-037 (Locking handle)

Includes Flex 90 Extension

OPERATION

Connect the Control Handle to the lubricant supply line (1/2" NPT Male thread required).

The semi-auto tip may be manually opened by pulling forward on its shell or automatically if pressurized to 20-25 psi.

When the required amount of product has been dispensed, release the trigger to stop delivery. The semi-auto tip must be closed by pushing the shell to the closed position.

DISASSEMBLY

Remove swivel (11) and with needle nose pliers unscrew plunger body (9). Items 6 thru 8 will be removed with plunger body (9). In order, remove seal (6), o-ring (8), and spring (7) from plunger body (9). Remove screws (13) and slide trigger (14) off of cam (12). The cam (12) can now be removed from body (2).

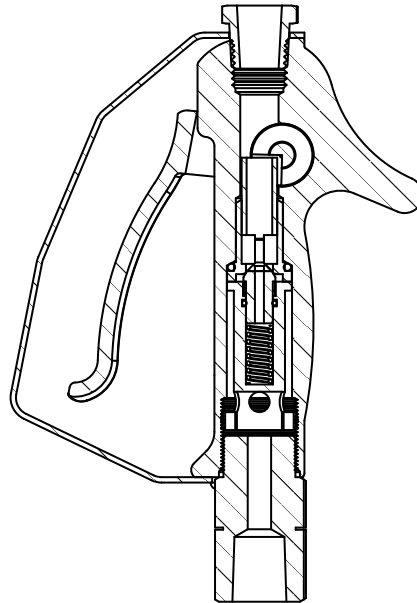
Reassemble in reverse order making sure to align cam (12) as shown. Once together make sure trigger functions smoothly before putting back into operation.

TROUBLE SHOOTING

TROUBLE	CAUSE	REMEDY
No fluid passing through the meter	Damaged plunger seal	Replace damaged plunger seal (item 6)
Constant oil leak from the tip	Debris in the tip	Remove the tip and blow out any debris, replace if necessary
	Damaged plunger seal	Replace plunger seal (item 6)
Oil leak from the Cam (trigger) assembly	Damaged o-rings	Replace o-rings (item 4)
Low flow rate	Low oil supply pressure	Check oil supply system
Oil leaking from the swivel inlet	Damaged o-ring or swivel	Replace o-ring (item 10) or swivel (item 11)

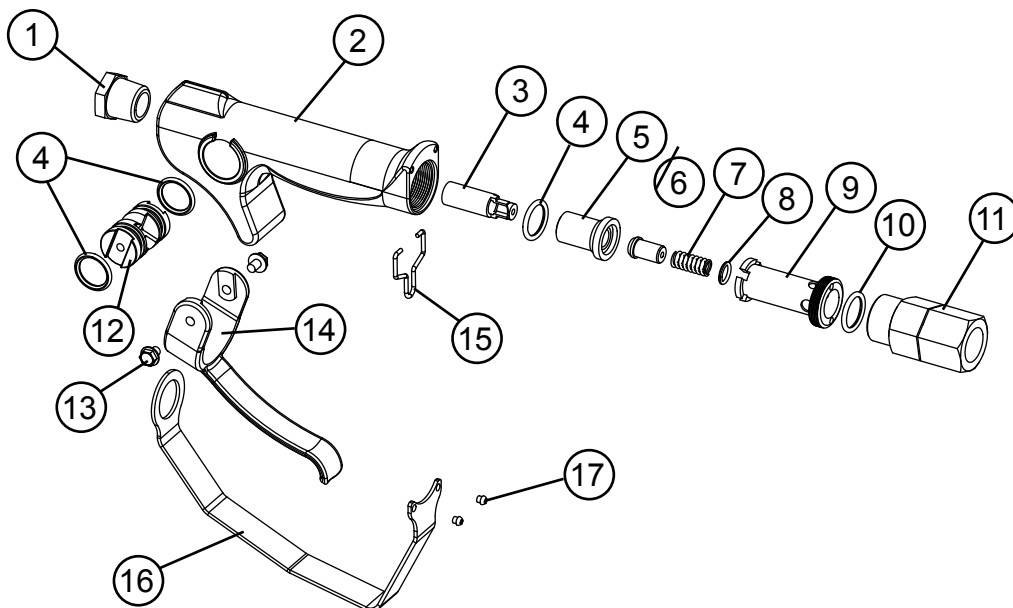
PARTS LIST

ITEM	PART NO.	DESCRIPTION	QTY
1	806534	Bushing	1
2	825261	Grip, Body	1
	832195	Grip, Body, Locking	1
3	832197	Plunger	1
4	807340	Buna-N O-ring, -.115*	3
5	826999	Sleeve	1
6	826997	Seal*	1
7	827201	Spring*	1
8	806910	Buna-N O-ring, -.012*	1
9	827200	Body, Plunger	1
10	827060	Buna-N O-ring, -.119*	1
11	810603	Swivel	1
12	825252	Cam, Pivot	1
13	827534	Screw, 10-24 x 1/2"	2
14	825251	Trigger	1
15	832196	Trigger Lock**	1
16	832192	Guard, Trigger	1
17	832193	Screw, 6-32 x 1/4"	2

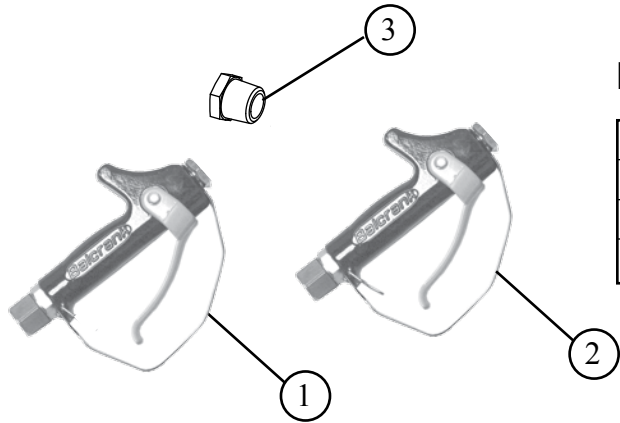


* Contained in kit 832238

** Locking Models only



PARTS LIST



HANDLE BODY COMPLETE

ITEM	PART NO.	DESCRIPTION
1	826960	Hand Grip with Swivel
2	832194	Lock Hand Grip with Swivel
3	806534	Bushing



DISPENSING WAND

Item	EXTENSIONS			Description
	Auto	Semi-Auto	High Flow Semi-Auto	
1	3332-034	3332-053	3332-063	RIGID
2	3332-035	3332-054	3332-038	FLEX
3	3332-061	3332-055	3332-064	GEAR OIL
4	3332-062	3332-056	3332-065	FLEX 90

REVISION LOG:

Rev A - added non high flow models w/
Semi-Auto tip

Balcrank Lubrication Equipment Warranty Statement

All Balcrank equipment sold by authorized Balcrank distributors is warranted to their original customer to be free from defects in materials and workmanship for a period of one year from the date of sale to that customer. Selected Balcrank equipment carries warranty terms for a more extended period as defined in the Balcrank Lubrication Equipment & Accessories User Price List, wherein a "lifetime" warranty represents a warranty period of thirty years. Within the initial one-year warranty period, Balcrank will repair or replace all Balcrank equipment determined by Balcrank to have defective materials or workmanship. For equipment carrying more extended warranties, Balcrank will repair or replace the product including parts and labor during the first full year and will provide parts only for the remainder of the warranty period.

This warranty applies only to equipment installed and operated according to applicable Balcrank Service Bulletins and Installation Instructions.

Any equipment claimed to be defective must be returned, freight prepaid, to an Authorized Balcrank Service Center (ASC). Upon receiving candidate warranty equipment from a customer, ASC will: 1) diagnose to determine the warrantable condition of the equipment, 2) submit, prior to repair or replacement, a request to Balcrank for warranty authorization, then 3) in cooperation with Balcrank, proceed with repair locally or forward the equipment to Balcrank and obtain replacement. If the part(s) or equipment items are found defective upon inspection by Balcrank, they will be repaired or replaced, and then will be returned to the ASC. If Balcrank finds the claimed part(s) or equipment not to be defective, the ASC will receive written authorization from the original customer, and then repair them for a reasonable charge to the customer, which will include all applicable parts, labor, and return transportation costs.

Optionally, the customer may submit certain eligible products directly to Balcrank for warranty return by using Balcrank Lubrication Equipment Direct Service Warranty Procedure. Eligible products are defined in the Balcrank Lubrication Equipment & Accessories User Price List. Refer to the Balcrank web site www.balcrank.com for a copy.

Any equipment returned to Balcrank must have the Warranty Service Claim number (WSC#) clearly marked on the outside of the carton. Balcrank's sole responsibility is for defects in material and workmanship, and Buyer's sole and exclusive remedy hereunder, shall be limited to repair or replacement of the defective part or equipment.

This warranty does not cover, nor shall Balcrank be liable for repair or replacement of parts or equipment resulting from general wear and tear through use, or damage or failure caused by improper installation, abuse, misapplication, abrasion, corrosion, insufficient or improper maintenance, negligence, accident, alteration, or substitution of non-Balcrank parts.

Furthermore, the Warranty for Lubrication Equipment and Accessories does not cover the following specific conditions:

- Failure or damage to equipment caused by dirt or debris in compressed air lines and fluid lines. This includes, but is not limited to, clogged inlet filters, strainers, or regulators; fluid meters; control handles; fluid tips; and valves.
- Failure of normal wear parts including but not limited to: o-rings, packings, seals and valves unless originally improperly installed by the factory.
- Products placed in applications for which their use was not intended. Examples include but are not limited to Lubricant pump being used to pump solvents, or placing equipment intended strictly for indoor use outdoors
- Damage to equipment resulting from operation above and beyond Balcrank's recommendations.
- Leaks at air and fluid fittings and connections.
- Damage caused by thermal expansion whenever adequate pressure relief was not included in the system.
- Loose suction tubes on pumps.
- Incorrect hose reel spring tension, requiring adjustment.

THERE ARE NO OTHER WARRANTIES, EXPRESSED OR IMPLIED, INCLUDING WARRANTIES OF MERCHANTABILITY OR FITNESS FOR A PARTICULAR PURPOSE. IN NO EVENT SHALL BALCRANK BE LIABLE FOR ANY SPECIAL, CONSEQUENTIAL, OR OTHER DAMAGES OF SIMILAR NATURE, INCLUDING BUT NOT LIMITED TO LOST PROFITS, LOST PRODUCTION, PROPERTY DAMAGE, PERSONAL INJURY, WHETHER SUFFERED BY BUYER OR ANY THIRD PARTY, IRRESPECTIVE OF WHETHER CLAIMS OR ACTIONS, LEGAL OR EQUITABLE, FOR SUCH DAMAGES ARE BASED UPON CONTRACTS, WARRANTY, NEGLIGENCE, STRICT LIABILITY, OR OTHERWISE. ANY CLAIM OR ACTION FOR BREACH OF WARRANTY MUST BE BROUGHT WITHIN TWO (2) YEARS FROM THE DATE OF SALE TO THE ORIGINAL CUSTOMER.

Balcrank® Products Inc.
115 Reems Creek Road
Weaverville, NC 28787
800-747-5300
800-763-0840 Fax
www.balcrank.com

Distributed by:

SERVICE BULLETIN SB3049
REV. A 4/07
832236