

Balcrank[®]

Centrifugal DEF Pump Model 1200-013





Thoroughly read and understand this manual before installing, operating or servicing this equipment.

**OPERATION, INSTALLATION,
MAINTENANCE AND REPAIR GUIDE**

GENERAL SAFETY REQUIREMENTS

NOTE: THOROUGHLY READ AND UNDERSTAND THIS MANUAL BEFORE INSTALLING, OPERATING OR SERVICING THIS EQUIPMENT. THE MANUFACTURER WILL NOT BE LIABLE IN THE EVENT OF ACCIDENTS OR DAMAGE CAUSED BY NEGLIGENCE OR FAILURE TO FOLLOW THE INSTRUCTIONS IN THIS SERVICE BULLETIN. FURTHERMORE, THE MANUFACTURER WILL NOT BE HELD LIABLE FOR ANY DAMAGE CAUSED BY THE IMPROPER USE OF THIS PRODUCT.

	! WARNING
	The motors are not of an anti-explosive type. DO NOT install them where combustible vapors could be present.


	! DANGER
	DANGER: Not for use with fluids that have a flash point below 100° F (38° C, examples: gasoline, alcohol). Sparking could result in an explosion which could result in death.

SAFETY



Complies with applicable European standards



	! WARNING
	This unit is not suitable for pumping flammable liquids or to operate in areas in which explosions may occur. Avoid contact between the electrical power supply and the fluid being pumped. Under no circumstances should the pump be carried by the power supply cable.

! WARNING
If there are any doubts regarding the safety condition of the unit, do not use it.

! CAUTION
Diesel Exhaust Fluid pumps and crystallization
Diesel Exhaust Fluid is considered in the industry as a “creep” product. This simply means that Diesel Exhaust Fluid will find its way through every possible opening. Once Diesel Exhaust Fluid is exposed to air, the water will evaporate leaving behind a “crystallized” white powdery residue. This residue can be cleaned with de-ionized water and a bit of scrubbing. As you can imagine, allowing the Diesel Exhaust Fluid to “crystallize in a pump is not a good idea. It can lead to premature pump failure.
Here are some best practices to follow:
<ul style="list-style-type: none"> - Don't allow the barrel, tote, or tank to run dry. This introduces air into the pump and will cause “crystallization” - If at all possible, the pump should be used regularly to keep “crystallization” to a minimum. - If the Diesel Exhaust Fluid pump will not be used for an extended period of time, it should be flushed with de-ionized water to prevent “crystallization” - If “crystallization” has occurred in your pump, don't try and pump it out. Open the pump and clean it with de-ionized water - Following these practices will ensure that your True Blue pump will last and deliver Diesel Exhaust Fluid as expected.

TABLE OF CONTENTS

Safety rules	3
General information	3
Assembly / Installation	3
Priming	3
Operation	3 - 4
Maintenance	4
Tote Mounting Diagram	5

SAFETY RULES

Before performing any checks or maintenance, switch the system's power off and disconnect the plug from the power outlet.

GENERAL INFORMATION

The model 1200-013 true blue centrifugal pump is designed for the simple and efficient transfer of Diesel Exhaust Fluid (DEF). The true blue stationary electric centrifugal pumps have a delivery rate of 6-7 gallons per minute and feature a noise level of less than 65 dBa.

TECHNICAL INFORMATION

Max operating pressure.....87 psi / 6 Bar
Max temp. of liquid.....95°F
Operating Voltage.....110 VAC
Voltage variation permitted.....+/- 5%
Noise Level.....65dB(A)

ASSEMBLY / INSTALLATION

- Unpack and inspect the unit.
- For tote mounting of pump assembly, see the tote Mounting Diagram on page 5.
- If not already connected, connect the delivery hose to the hose-end fitting on the flow meter or pump. Ensure that the hose clamp has been tightened securely to prevent leaks.
- If not already connected, connect the delivery hose to the swivel coupling on the dispense nozzle. Ensure that the hose clamp has been tightened securely to prevent leaks.
- Ensure that the suction line is completely airtight and that it is submerged in at least 20 inches into the product. Operation of the pump with loss of suction can damage the unit.
- If not already connected, connect the free end of the suction tube to the hose-end fitting on the pump. Ensure that the hose clamp has been tightened securely to prevent leaks.
- Fill the drip-tray/nozzle-holster with approximately 4 inches of distilled or de-ionized water to keep the nozzle end wetted. This will help prevent the build-up of residue/crystallization on the nozzle. *Change the water weekly or daily depending on amount of use.*

PRIMING

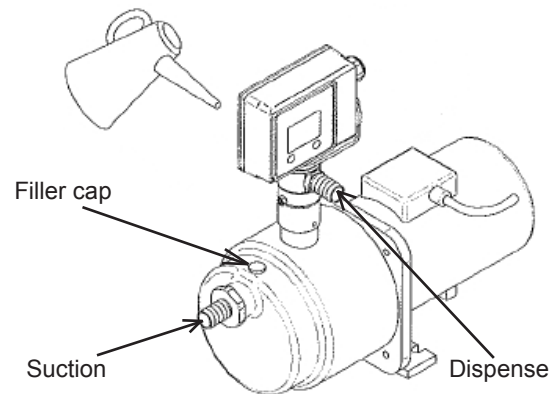


WARNING

Running the pump dry will damage the mechanical seal. The pump should only be ran dry during the priming process.

WETTING THE PUMP

- Remove the filler cap (shown below) and fill the fluid chamber with approximately 2 to 2.5 quarts of distilled or de-ionized water.



- Replace the filler cap. (**Tighten only enough to seal the cap, over-tightening can break the cap.**)
- Point the delivery nozzle into a 1 gallon or larger container. Open the delivery handle and turn the pump on.
- When all air is eliminated from the system and a good steady flow is achieved from the delivery nozzle, pump one additional gallon of the product into an empty container. The pump is now primed and ready for use.

OPERATION

To start dispensing

- Start the pump using the switch.
- Insert the spout of the nozzle into the opening of the tank to be filled.
- Press the nozzle trigger to dispense.

To stop dispensing

- Release the nozzle trigger ensuring that the spout is still in the tank.
- Switch the pump off.
- Remove the nozzle from the tank opening place the nozzle back into the nozzle holder.



WARNING

The user is responsible for carrying out the dispensing process correctly. The manufacturer will not be liable for any damages caused by incorrect dispensing.



WARNING

Do not leave the dispensing nozzle unattended during operation.

MAINTENANCE



WARNING

Service should be performed by manufacturer authorized technicians only. Tampering with the unit could lead to a loss of performance, possible personal and/or property damage and will void the warranty.

- Before performing any maintenance, make sure that the power is off, the unit is disconnected from the power source and that there is no possibility of accidental connections.
- Change the distilled or de-ionized water in the drip-tray/nozzle-holster weekly or daily depending on amount of use. This will help prevent the build-up of residue/crystallization on the nozzle.
- The pump must be serviced by a manufacturer authorized technician. Any service performed by un-authorized personnel will void the warranty and could potentially damage the unit or lead to personal injury.
- If the following precautions are observed, the unit should not require any maintenance.
 - If the possibility of freezing exists, purge the pump of product & prime it prior to the next use.
 - Regularly check that the suction line is perfectly clean.
 - If the pump will not be used for an extended period, purge the pump of product, rinse with de-ionized water, ensure the pump is completely empty and store in a dry place.

REPLACEMENT PARTS

Item	Description	Part Number
1	Motor Cap	832961*
2	Plug	832962*

*Note: No other parts are available.



REVISION LOG

Rev A 6/09 - Release

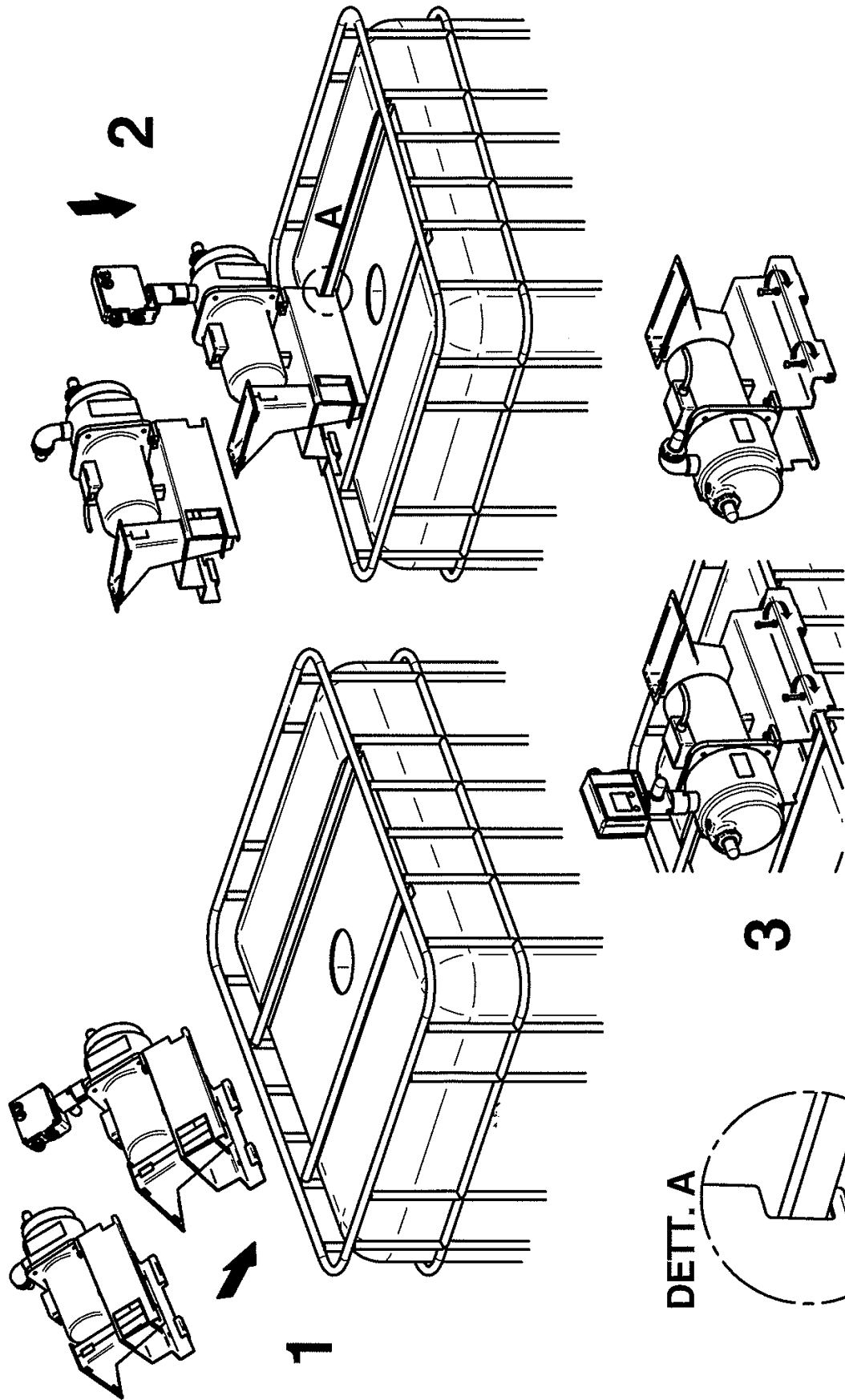
Rev B 9/09 - Added Tote mount diagram

Rev C 5/10 - Modified assembly/installation and priming instructions on page 3.

Rev D 9/10 - Added table & diagram for replacement parts on page 4.

Rev E 6/12 - Added caution about DEF pumps and crystallization.

Tote Mounting Diagram



**For Warranty Information Visit:
www.balcrank.com**

Balcrank® Corporation
115 Reems Creek Road
Weaverville, NC 28787
800-747-5300
800-763-0840 Fax
www.balcrank.com

SERVICE BULLETIN SB1087
Rev E 6/12