

Balcrank®

In-Line Mechanical Control Handle

Model # 3330-145
w/ Rigid Extension

Model # 3330-146
w/ Flex Extension
(shown)

Model # 3330-147
w/ Flex 90 Extension

Model # 3120-066
In-Line Meter
(shown)



Thoroughly read and understand this manual before installing, operating or servicing this equipment.

Operation, Installation,
Maintenance and Repair Guide

GENERAL SAFETY



Caution:

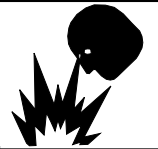
- 1) Always read and follow the fluid manufacturers's recommendations regarding the use of protective eye wear, clothing, gloves, and other personal equipment.
- 2) Never alter or modify any parts of this product; doing so may cause damage and/or personal injury.



IMPORTANT

Read these safety warnings and instructions in this manual completely, before installation and start up of the control handle. It is the responsibility

of the purchaser to retain this manual for reference. Failure to comply with the recommendations stated in this manual will damage the control handle and void factory warranty.



WARNING

DANGER: Not for use with fluids that have a flash point below 100°F (38°C, examples: gasoline, alcohol). Sparking could result in an explosion which could result in death.



WARNING

Always use the following Pressure Relief Procedure whenever shutting off, cleaning, or in any way checking or servicing the control handle:

- 1) Disconnect compressed air line or turn off power supply at the fluid pump.
- 2) Point the control handle outlet into a waste container and open trigger to relieve pressure.
- 3) Open any bleed-type supply air valves and fluid drain valves in the system.
- 4) Leave the drain valves open until you are ready to re-pressurize the system.



WARNING

Do not place your hand or fingers over the dispensing nozzle and/or aim the nozzle at a person at any time. Personal injury may result.



WARNING

Airborne particles and loud noise hazards.

Wear ear and eye protection.



CAUTION

Maximum Fluid Pressure 1000 PSI. Under no circumstances should the control handle be aimed at any person or your own body at anytime. Personal injury may result.

TABLE OF CONTENTS

Cover.....	1
General Safety.....	2
Product Description.....	2
Technical Specifications.....	2
Operation.....	2
Maintenance.....	3
Parts List.....	4
Troubleshooting.....	4
Warranty.....	6

PRODUCT DESCRIPTION

The inline series analog lube meter is designed specifically to dispense motor oils, automatic transmission fluid, antifreeze (Glycol) and antifreeze/water solution. Perfect balance, lightweight, ruggedness, and robust grip with built in trigger guard make it the best choice for overhead reel systems. The register module dispenses quarts and totalizes in gallons. The 4 digit analog batch display will register up to 999.9 quarts and the 5 digit analog totalizer up to 99,999 gallons.

TECHNICAL SPECIFICATIONS

Accuracy	+/- 1%
Flow range.....	0.25 - 7 Gal/min.
Max operating pressure.....	1000 psi
Weight	1.75 lbs
Inlet.....	1/2" NPT compatible
Outlet.....	1/2" NPT compatible
Operating Temp. Range.....	- 4°F to 176°F
Fluid compatibility.....	Oils (up to SAE 140), ATF, Antifreeze (Glycol), Antifreeze/ water solution



OPERATION

1. Connect the control handle to the lubricant supply line (1/2" NPT male thread required).
2. Open the manual tip.
3. Press the reset button to zero out the batch total.
4. To dispense, squeeze control handle trigger. When the desired amount of product has been dispensed (read in quarts) release trigger to stop delivery.
5. Close the manual tip & wipe it clean with a rag.
6. Press the reset button to zero out the batch total.

MAINTENANCE

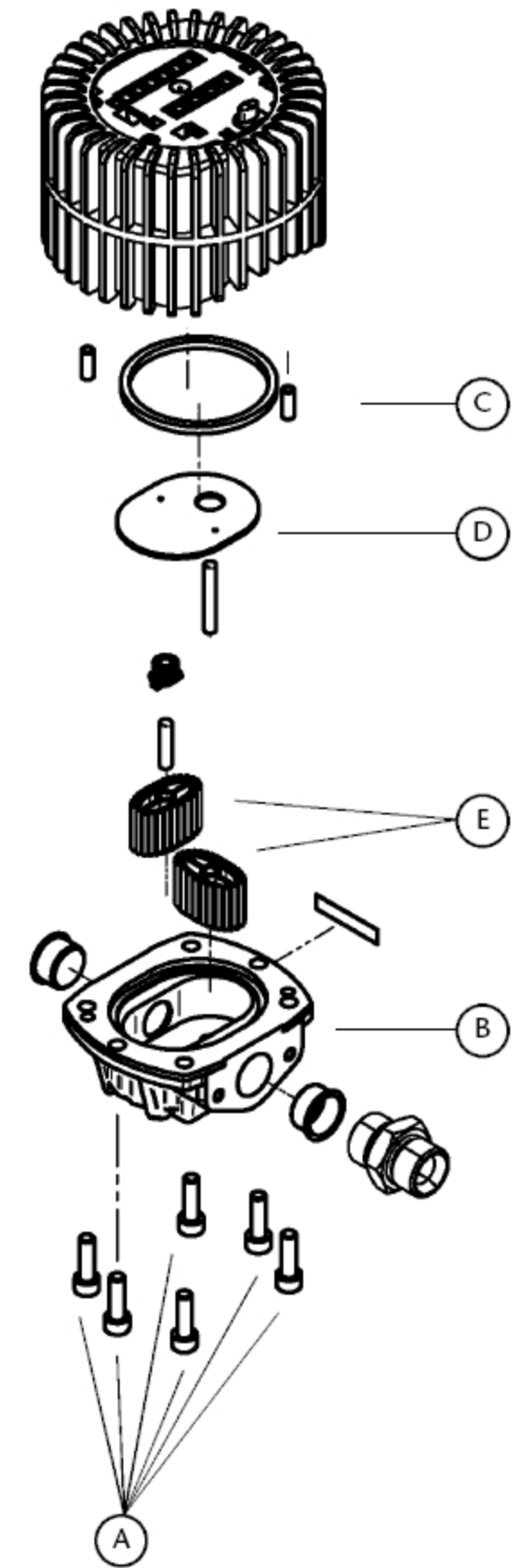
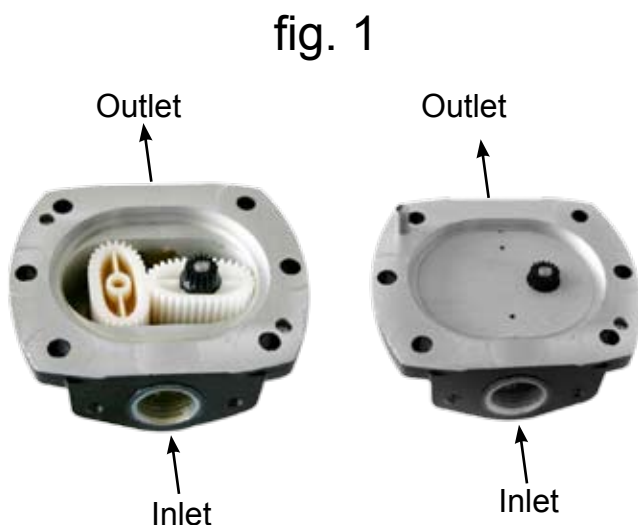
Cleaning the Fluid Chamber

To access and clean the fluid chamber

1. Remove the protection boot.
2. Unscrew the six bolts (A) under the meter body.
3. Remove the top half of the meter from the fluid chamber.
4. Remove the gasket (C), the oval disc (D) and the gears (E).
5. Clean the fluid chamber and the gears carefully using a soft brush.

To reassemble the meter

1. Follow the steps above in reverse order
2. Check and lubricate the gasket (C) seal and refit.
3. Install the oval gears (E). The oval gear with the circular transmission should be on the right (fig. 1).
4. Ensure the oval gears rotate freely.
5. Reinstall the oval disc (D).
6. Reassemble the top half top half of the meter ensuring that the gears of the top half line up with the transmission gear of the fluid chamber.
7. Reinstall the six bolts (A)





PARTS LIST

ITEM	PART #	DESCRIPTION
1	829482	Handle w/swivel
2	806895	O-ring Buna 70 A -112
3	832169	Adapter 1/2" NPT x 3/8" NPSM
4	832862	Meter Mechanical
5	832190	Rigid Extension
6	831789	Flex 90 Extension
7	832199	Flex Extension

TROUBLESHOOTING

TROUBLE	POSSIBLE CAUSE	REMEDY
Meter is not accurate	Fluid chamber dirty or clogged	Clean the fluid chamber
	Air in the system	Identify & eliminate leaks in suction lines.
	Fluid viscosity outside of range recommended for meter	Refer to technical specifications for meter range capability
Reduced or no flow	Fluid chamber is dirty or clogged	Clean the fluid chamber
	Blocked strainer	Clean or replace strainer
Leaking nozzle (tip)	Damaged seals	Replace the extension (tip)
Oil leak from trigger area	Damaged seals	Replace the handle
Oil leak from inlet swivel	Damaged O-ring or swivel	Replace the handle

NOTES

Revision Log:
Rev. A - Release 2/10

**For Warranty Information Visit:
www.balcrank.com**

Balcrank® Corporation
Weaverville, NC 28787
800-747-5300
800-763-0840 Fax
www.balcrank.com

SERVICE BULLETIN SB3069
Rev. A 2/10