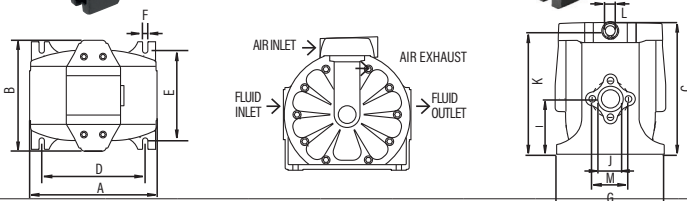
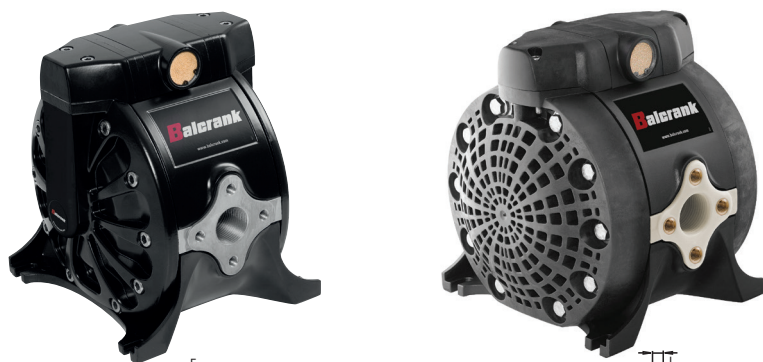


AODD CenterFlo CF30



**Anti-freeze (Glycol)
Light viscosity fluids
Windshield wash
solution
Synthetic and
mineral oils
DEF
Used anti-freeze**

CenterFlo pumps can handle a wide range of fluids used for vehicle service.

Typical applications are transferring and dispensing up to 28 gal/min. They can be used as stand-alone pumps for transfer applications or as systems pumps that include hose reels.

Markets Served

- Car and truck dealers
- In-plant transfer
- Lube trucks
- Quick lubes

Pressure relief valve kit 3120-232 for this pump is recommended and not included.

MODELS AVAILABLE	DESCRIPTION
1120-026A	CF30 Polypropylene
1120-040	CF30 Aluminum
1120-031A	CF30 Polypropylene/DEF
3120-232	Pressure Relief for Diaphragm 1/2" NPT

Dimensions inches for aluminum pump (MM)											
A	B	C	D	E	F*	G	I	J	K	L	M
8.50" (216 mm)	7.44" (189 mm)	8.94" (227 mm)	6.89" (175 mm)	6.06" (154 mm)	0.35"	7.24" (184 mm)	3.72" (94 mm)	1" (F)	8.27" (210 mm)	0.37" (F)	2.44**
Dimensions inches for polypropylene pump (MM)											
8.50" (216 mm)	8.58" (218 mm)	9.06" (231 mm)	6.89" (175 mm)	6.06" (154 mm)	0.31"	7.24" (184 mm)	3.72" (94 mm)	1" (F)	8.33" (212 mm)	0.37" (F)	2.44**

*Diameter of the holes for fasteners in each of the four pump feet. **Flange connection: 4 bolts - M 10 (2.44" between centers).

TECHNICAL DATA			
	1120-026A	1120-031A	1120-040
Air inlet	3/8" NPSM(F)	3/8" NPSM(F)	3/8" NPSM(F)
Fluid inlet port	1" NPT(F)	1" BSPP(F)	1" NPT(F)
Fluid outlet port	1" NPT(F)	1" BSPP(F)	1" NPT(F)
Max. free flow	28 gal/min (106 l/min)	28 gal/min (106 l/min)	28 gal/min (106 l/min)
Air pressure range	22 to 102 psi (1.5 to 7 bar)	22 to 102 psi (1.5 to 7 bar)	22 to 102 psi (1.5 to 7 bar)
Solids in suspension	3/16" (4 mm)	3/16" (4 mm)	3/16" (4 mm)
Wetted Materials	PTFE (Teflon [®]), Viton [®] , Polypropylene, Stainless Steel, and Hytrel [®]	PTFE (Teflon [®]), Viton [®] , Polypropylene, Stainless Steel, and Hytrel [®]	Aluminum, Acetal Teflon [®] , Buna-N [™] , Hytrel [®] , and Stainless Steel
Recommended fluids	Windshield wash solution	Diesel exhaust fluid	Light viscosity fluids, synthetic, mineral oils, and anti-freeze
Recommended applications	Fluid dispensing, transfer, and DEF	Fluid dispensing, transfer, and DEF	Fluid dispensing, transfer, and DEF
Service Bulletin	SB 1145	SB 1145	SB 1145

(*) 2 bar test with a PTFE (Teflon[®]) diaphragms pump.

** Balcrank does not recommend pumping windshield wash or any other fluid below 100° flash point.

Contact Balcrank for additional information.

AIR MOTOR	HOUSINGS			WETTED PARTS		
Central Body & Air Chambers	Fluid Ports / Location Multiport manifolds: central and lateral	Fluid Chambers & Manifolds	Hardware Bolts & Inserts	Valve Seats	Valve Balls	Diaphragms Type & Material
1120-026A						
Polypropylene	NPT threaded ports	Polypropylene	Stainless Steel	Stainless Steel	PTFE	Hytrel [®]
1120-040						
Aluminum	NPT threaded ports	Aluminum	Carbon Steel	Hytrel [®]	Hytrel [®]	Hytrel [®]
1120-031A						
Polypropylene	BSPP threaded ports	Polypropylene	Stainless Steel	Stainless Steel	PTFE	Hytrel [®]

