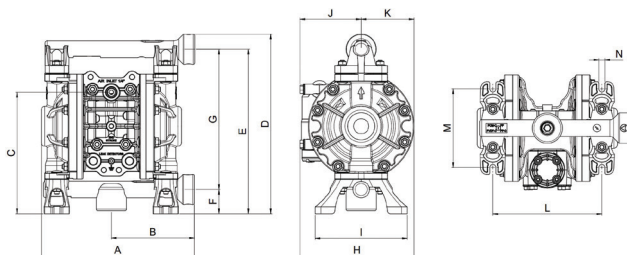
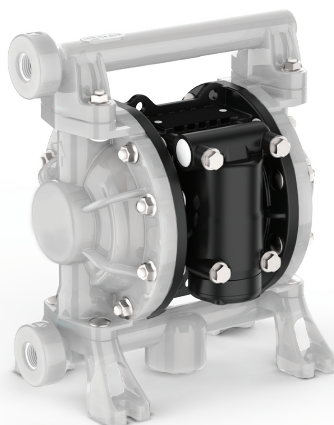


AODD Pivot Series UP03

PIVOT
S E R I E S
UNIVERSAL DESIGN



Dimensions inches (MM)							
A	B	C	D	E	F	G	
7.95" (202 mm)	4.33" (110 mm)	6.34" (161 mm)	9.33" (237 mm)	8.54" (217 mm)	1.26" (32 mm)	7.28" (185 mm)	
H	I	J	K	L	M	N	O
5.95" (151 mm)	4.80" (122 mm)	3.19" (81 mm)	2.76" (70 mm)	5.71" (81 mm)	4.09" (145 mm)	6.18" (104 mm)	0.32" (8 mm)

TECHNICAL DATA	
Air inlet	1/4" NPT(F)
Fluid inlet port	3/8" NPT(F)
Fluid outlet port	3/8" NPT(F)
Max. free flow	8.2 US gal/min (31 l/min)
Air pressure range	20 to 100 psi (1.5 to 7 bar)
Solids in suspension	1/16" (1.6 mm)
Wetted Materials	Refer to materials table at the bottom of the page
Recommended Fluids	Anti-freeze (Glycol), windshield wash solution, lubricants, hydraulic oil
Recommended Applications	Small volume transfer, de-watting and fluid evacuation
Service Bulletin	SB 1208

** Balcrank does not recommend pumping windshield wash or any other fluid below 100° flash point.
Contact Balcrank for additional information.

AIR MOTOR	HOUSINGS			WETTED PARTS		
Central Body & Air Chambers	Fluid Ports / Location Multiport manifolds: central and lateral	Fluid Chambers & Manifolds	Hardware Bolts & Inserts	Valve Seats	Valve Balls	Diaphragms Type & Material
1120-050 UP03B-NPS-PTA						
B= Polypropylene	N= NPT threaded ports	P= Poly	S= Stainless Steel	P= Poly	T= PTFE	A= Santoprene

Anti-freeze (Glycol) Windshield wash solution Synthetic and mineral oil

The Pivot Series combines a universal design with a unique frictionless Pivot-Shaft Air Valve to provide maximum performance and efficiency. This pump has been designed for simplified cleaning and maintenance and all Pivot Series pumps are designed for maximum fluid flow, and reduced air consumption.

The UP03 Pivot Series pump transfers fluid up to 8 gal/min. Combining a conventional flow design with a special pivoting air valve for increased reliability. This pump can be used as a stand-alone pump for transfer or as a system pump for fluid distribution.

Markets Served

- Car and Truck Dealerships
- Mining and Construction
- Fleets
- In Plant Transfer
- Lube Trucks
- Agriculture / Farm Implement

MODELS AVAILABLE	DESCRIPTION
1120-050	3/8" Diaphragm Pump Polypropylene UP03B-NPS-PTA

