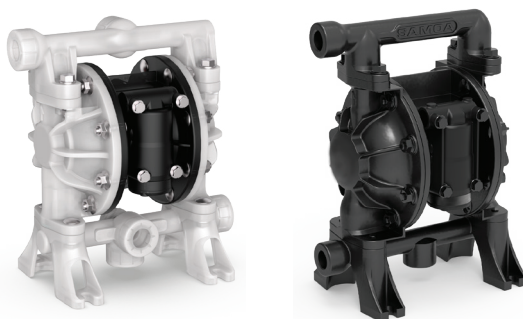


# AODD Pivot Series UP05

**PIVOT**  
S E R I E S  
UNIVERSAL DESIGN



**Anti-freeze (Glycol)  
Windshield wash  
solution  
Synthetic and  
mineral oil**

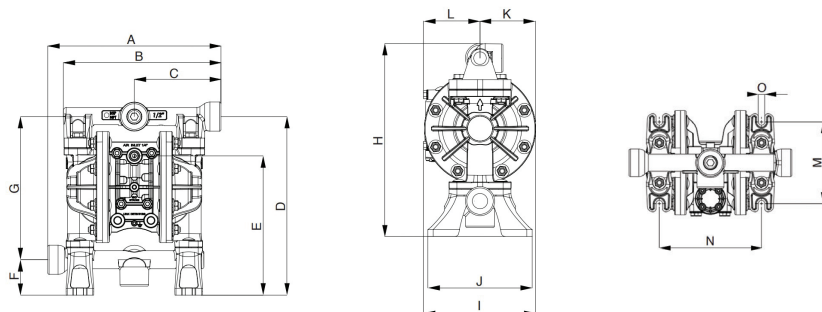
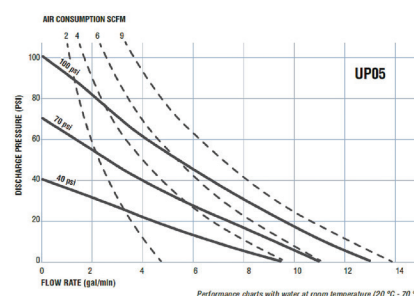
The Pivot Series combines a universal design with a unique frictionless Pivot-Shaft Air Valve to provide maximum performance and efficiency. This pump has been designed for simplified cleaning and maintenance and all Pivot Series pumps are designed for maximum fluid flow, and reduced air consumption.

The UP05 Pivot Series pump transfers fluid up to 14 gal/min. Combining a conventional flow design with a special pivoting air valve for increased reliability. This pump can be used as a stand-alone pump for transfer or as a system pump for fluid distribution.

## Markets Served

- Car and Truck Dealerships
- Mining and Construction
- Fleets
- In Plant Transfer
- Lube Trucks
- Agriculture / Farm Implement

MODELS AVAILABLE	DESCRIPTION
<b>1120-046</b>	1/2" Diaphragm Pump Aluminium UP05A-NAC-AHC
<b>1120-047</b>	1/2" Diaphragm Pump Polypropylene UP05B-NPS-PMA
<b>1120-052</b>	1/2" Diaphragm Pump Conductive Polypropylene UP05B-BPS-PMA (DEF)



Dimensions inches (MM)						
A	B	C	D	E	F	G
9.84" (250 mm)	8.98" (228 mm)	4.92" (125 mm)	10.12" (257 mm)	7.87" (200 mm)	2.01" (51 mm)	8.11" (206 mm)

H	I	J	K	L	M	N	O
10.95" (278 mm)	6.34" (161 mm)	5.91" (150 mm)	3.15" (80 mm)	3.19" (81 mm)	4.92" (125 mm)	6.18" (157 mm)	0.39" (10 mm)

TECHNICAL DATA			
	1120-046	1120-047	1120-052
Air inlet	1/4" NPT(F)	1/4" NPT(F)	1/4" NPT(F)
Fluid inlet port	1/2" NPT(F)	1/2" NPT(F)	1/2" NPT(F)
Fluid outlet port	1/2" NPT(F)	1/2" NPT(F)	1/2" NPT(F)
Max. free flow	13.5 gal/min (51 l/min)	14.3 gal/min (54 l/min)	14.3 gal/min (54 l/min)
Air pressure range	20 to 100 psi (1.5 to 7 bar)	20 to 120 psi (1.5 to 8 bar)	20 to 100 psi (1.5 to 7 bar)
Solids in suspension	3/32" (2.5 mm)	3/32" (2.5 mm)	3/32" (2.5 mm)
Wetted Materials	Refer to materials table at the bottom of the page		
Recommended Fluids	Anti-freeze (Glycol), lubricants, used fluid and hydraulic oil	Anti-freeze (Glycol), windshield wash solution, lubricants, used fluid, and hydraulic oil	Anti-freeze (Glycol), windshield wash solution, lubricants, used fluid, and hydraulic oil
Recommended Applications	Medium volume transfer, de-watting and fluid evacuation		
Service Bulletin	SB 1211		

\*\* Balcrank does not recommend pumping windshield wash or any other fluid below 100° flash point. Contact Balcrank for additional information.

AIR MOTOR	HOUSINGS			WETTED PARTS		
Central Body & Air Chambers	Fluid Ports / Location Multiport manifolds: central and lateral	Fluid Chambers & Manifolds	Hardware Bolts & Inserts	Valve Seats	Valve Balls	Diaphragms Type & Material
<b>1120-046 UP05A-NAC-AHC</b>						
A= Aluminum	N= NPT threaded ports	A= Aluminum	C=Carbon Steel	A=Aluminum	H=Hytrell	C=Hytrell
<b>1120-047 UP05B-NPS-PMA</b>						
B= Polypropylene	N= NPT threaded ports	P= Polypropylene	S= Stainless Steel	P= Polypropylene	M= Santoprene	A= Santoprene
<b>1120-052 UP05B-NPS-PMA</b>						
B = Conductive Polypropylene	B = 1/2" BSP(F) threaded ports	P= Polypropylene	S= Stainless Steel	P= Polypropylene	Santoprene	Santoprene