

Hose Reels

Product Selection Matrix

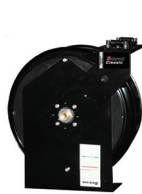
MAX. HOSE	CONSTRUCTION	RECOMMENDED MARKETS	RECOMMENDED APPLICATIONS	MOUNTING
AXIS AIR & WATER				
50' x 3/8"	All steel spool and Pedestal	Small to medium dealerships Tire shops Transmission shops	Air/Water - low pressure	Ceiling, wall, cabinet
EVOLUTION				
50' x 1/2"	Composite spool Steel pedestal Dual ball-bearings	Grease Small to medium dealerships Tire shops Transmission shops	Air/Water - high pressure, hot water Oil - medium pressure Grease - high pressure Enclosed models	Ceiling, floor, wall, truck, tank
CLASSIC				
50' x 1/2" 30' x 3/4"	All steel spool and Pedestal	Grease Auto dealerships Tire shops Transmission Shops	Air/Water - low pressure Oil - medium pressure DEF - medium pressure Grease - high pressure Enclosed models	Ceiling, floor, wall, tank
PREMIUM				
60' x 1/2"	All steel spool and Pedestal Double arm Dual ball-bearings	Truck shops Municipalities Railroad Mining Lube trucks	Air/Water - low pressure Oil - medium pressure Grease - high pressure	Ceiling, floor, wall, truck, tank
EXTENDED VOLUME (EV)				
50' x 3/4" 65' x 3/8" 65' x 1/2"	All steel spool and Pedestal Heavy duty High capacity Double arm Dual ball-bearings	Truck shops Municipalities Railroad Mining Lube trucks	Air/Water - low pressure DEF - low pressure Diesel - low pressure Oil - medium pressure Grease - high pressure	Ceiling, floor, wall, truck, tank
EXTENDED VOLUME EXTRA (EVX)				
50' x 1" 75' x 3/4" 100' x 1/2"	All steel spool and Pedestal Heavy duty High capacity Double arm Dual ball-bearings	Truck shops Municipalities Railroad Mining Lube trucks	Air/Water - low pressure Diesel - low pressure Evacuation - low pressure Oil - medium pressure	Floor, truck, tank
EXTENDED VOLUME+ (EVX+)				
50' x 1 1/2"	All steel spool and Pedestal Heavy duty High capacity Double arm Dual ball-bearings Dual spring	Truck shops Municipalities Railroad Mining Lube trucks	Air/Water - low pressure Diesel - low pressure Oil - medium pressure	Floor, truck, tank



AXIS



EVOLUTION



CLASSIC



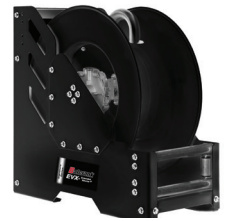
PREMIUM



EXTENDED
VOLUME (EV)



EXTENDED
VOLUME EXTRA (EVX)



EXTENDED
VOLUME + (EVX+)

Air & Water

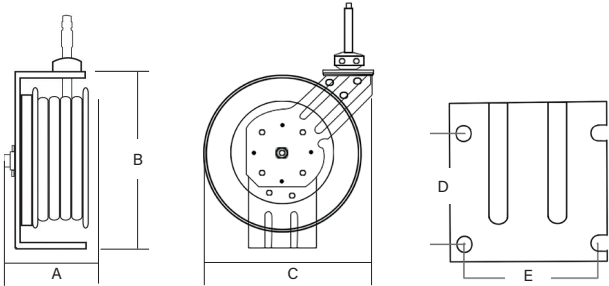


Steel “AXIS” Hose Reel: quality and value in a sturdy design

- Easy to install – light weight, compact design, will fit in small spaces.
- Five-position outlet arm – for use with ceiling, wall, cabinet mount.
- Proven design – excess spring torque assures reliable hose return
- Built to last – thick wall fluid swivel and hub; stamped steel rims, arms, and base
- Air hose, made from durable nylon exterior. Ball stop and 3’ connection hose included.
- Powder coat black finish – better corrosion resistance

MODELS AVAILABLE	DESCRIPTION
	Air & Water 300 psi (21 bar) for delivery
2130-002	50' x 3/8"

TECHNICAL DATA	
Low Pressure Reel	
Fluid inlet port	1/2" NPT(F)
Fluid outlet port	1/4" NPT(F)
Hose outlet thread	1/4" NPT(M)
Max pressure	300 psi (21 bar)
Wetted Parts	Approved for use with air & water



Dimensions inches (MM)				
A	B	C	D	E
6.7" (171 mm)	18.70" (475 mm)	18" (458 mm)	4" (102 mm)	5" (127 mm)

Hose Reels

Axis Air/Water Reel

Axis Air/Water Reel Description

Steel "AXIS" Hose Reel: quality and value in a sturdy design

- Easy to install – light weight, compact design, will fit in small spaces.
- Five-position outlet arm - for use with ceiling, wall, cabinet mount.
- Proven design - excess spring torque assures reliable hose return
- Built to last - thick wall fluid swivel and hub; stamped steel rims, arms, and base
- Air hose, made from durable nylon exterior. Ball stop and 3' connection hose included.
- Powder coat black finish – better corrosion resistance

Axis Air/Water Reel Specifications

2.1. **Need Specifications!!!**

Materials

3.1. **Need Wetted Materials!!!**

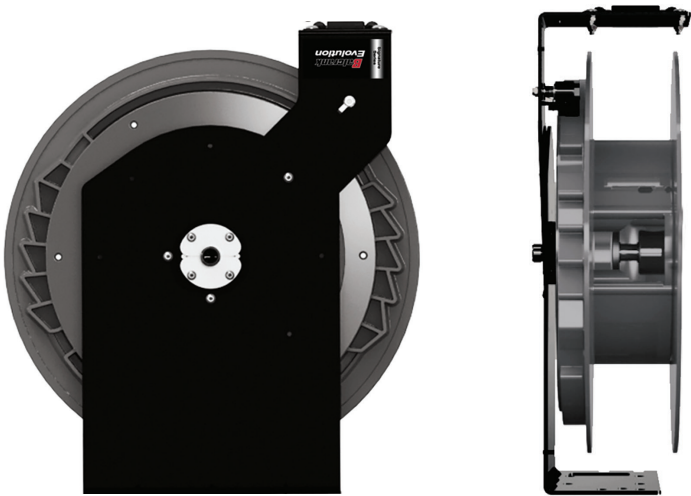
Warranty

- 4.1. Axis Air/Water Reel will have a 1-year standard warranty on defects in materials and workmanship only.
- 4.2. The reel hoses will have a 1-year replacement only warranty (defects in materials and workmanship only).

Air & Water
Anti-freeze
Oil
Grease

Evolution Hose Reel: an Evolution in Design and Performance
Lightweight but extremely rugged: steel pedestal and arm and dual ball-bearings. The Evolution is a solid performer. The Evolution combines design, performance and reliability with the right features and benefits for today's customers.

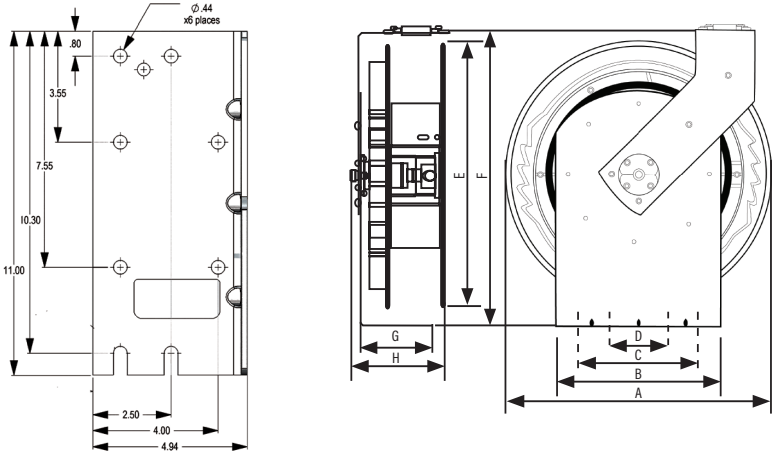
Evolution series reels have a narrow and lightweight design; includes hose, hose stop and a 2.5' connecting hose.



Hose Reels

MODELS AVAILABLE	DESCRIPTION	REPLACEMENT HOSE
Air & water low pressure 300 psi (21 bar) for delivery of air, water, windshield wash fluid, and anti-freeze		
2140-021	Bare reel - up to 50' Hose	
2140-007	30' x 3/8" ID hose	8136-030
2140-008	50' x 3/8" ID hose	8136-050
2140-010	30' x 1/2" ID hose	8141-030
2140-011	50' x 1/2" ID hose	8141-050
Oil medium pressure 2,750 psi (190 bar) for delivery of lubricants		
2140-002	Bare reel - up to 50' Hose	
2140-013	30' x 1/2" ID hose	8241-030
2140-014	50' x 1/2" ID hose	8241-050
Grease high pressure 5,000 psi (345 bar) for delivery of grease		
2140-005	Bare reel - up to 50' Hose	
2140-019	30' x 3/8" ID hose	8332-030
2140-020	50' x 3/8" ID hose	8332-050
Water high pressure 2,900 psi (200 bar) for delivery of hot water up to 302° F (150° C)		
2140-003	Bare reel - up to 50' Hose, hose inlet port 3/8" NPT (F)	

TECHNICAL DATA	
Low & Medium Pressure Reels	
Fluid inlet port	1/2" NPT(F) swivel
Fluid outlet port	1/2" NPT(F) swivel
Hose outlet thread	1/4" NPT(M) for 3/8" ID Hoses
	1/2" NPT(M) for 1/2" ID Hoses
Wetted materials	Low Pressure - Brass, Acetal & Buna-N™ Medium pressure - Steel (plated) & Buna-N™
High Pressure Reels	
Fluid inlet port	3/8" NPT(F) swivel
Fluid outlet port	3/8" NPT(F) swivel
Hose outlet thread	1/4" NPT(M) for 3/8" ID Hoses
Wetted materials	Nickel Plated Steel, Hardened steel and Polyurethane, Stainless Steel, Viton®
Service bulletin	SB 2025



Dimensions inches (MM)			
A	B	C	D
18" (458 mm)	11" (280 mm)	9.5" (242 mm)	4" (102 mm)
E	F	G	H
18" (458 mm)	20" (508 mm)	5" (127 mm)	6.5" (166 mm)

Hose Reels Evolution

Evolution Hose Reel Description

Lightweight but extremely rugged: steel pedestal and arm and dual ball-bearings. The Evolution is a solid performer. The Evolution combines design, performance and reliability with the right features and benefits for today's customers.

All Evolution series reels have a narrow and lightweight design; includes hose, hose stop and a 2.5' connecting hose.

Evolution Hose Reel Specifications

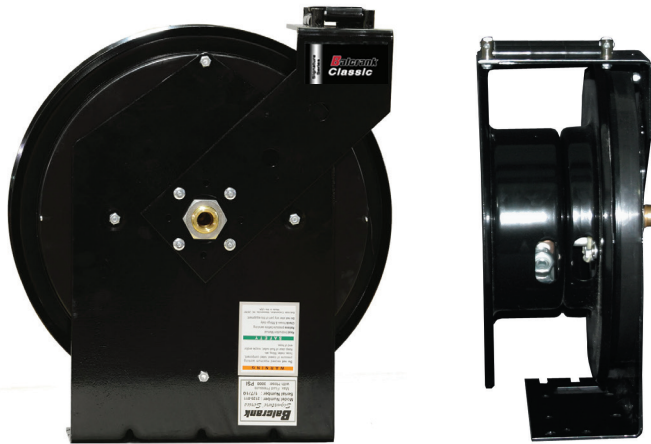
- 2.1. All Balcrank Evolution reels will have a pinch free, four-way roller hose guide that reduces hose wear and allows for delivery hose to be pulled tangent from 360°.
- 2.2. All Balcrank Evolution reels will utilize a composite high strength resin 8-position radial latch assembly for superior corrosion resistance and latching performance at desired hose length.
- 2.3. All Balcrank Evolution hose reels will include a full port, pressure balanced, swivel that produces minimal pressure loss with a flow path surface that is Nickel plated to provide excellent corrosion resistance and fluids compatibility.
- 2.4. All Balcrank Evolution reels will incorporate a de-clutching mechanism that eliminates the possibility of spring damage due to reverse winding of spool.
- 2.5. All Balcrank Evolution reels will utilize a composite spool and power spring canister produced from high strength resins that is dent and corrosion resistant. The enclosed power spring lubricated canister is removable and provides safe and convenient maintenance of power spring.
- 2.6. All Balcrank Evolution reels will have a power spring made from fatigue resistant Steel that is enclosed in a lubricated spring canister to protect against the environment.
- 2.7. All Balcrank Evolution reels will have a unitized stamped heavy-gauge Steel pedestal that includes stiffening gussets for superior rigidity.
- 2.8. All Balcrank Evolution reels will have a 7-position guide arm for multiple installation options; ceiling, wall, floor, tank, cabinet.
- 2.9. All Balcrank Evolution reels will have dual spool mount sealed ball bearings that reduce power spring fatigue, wear, and facilitates smooth and balanced operation during delivery hose extension and retraction.
- 2.10. All Balcrank Evolution reel components will be individually powder coated prior to assembly for corrosion resistance. Standard color is matte black, outlet guide arm is available in other colors upon request; gloss black, silver, green, red, blue, yellow, and white.
- 2.11. All Balcrank Evolution reels will include hose, hose stop, and a 2.5' connecting hose.

Materials

- 3.1. The wetted materials will consist of Brass, Acetal & Buna-N™ for low pressure
- 3.2. The wetted materials will consist of Steel (plated) & Buna-N™ for medium pressure
- 3.3. The wetted materials will consist of Nickel plated Steel, hardened Steel, and Polyethylene for high pressure

Warranty

- 4.1. Evolution Hose reel will have a 1-year standard warranty on defects in materials and workmanship only.
- 4.2. The reel hoses will have a 1-year replacement only warranty (defects in materials and workmanship only).



**Air & Water
Anti-freeze
Windshield wash
Oil
Grease
Diesel**

The Classic Hose Reel has been the **standard of reliability for over a decade**. This solid, all steel hose reel is preferred for general duty, automotive dealerships, and service garages. Proven performance and reliable operation.

All Classic series reels include hose, hose stop and a 2.5' connecting hose.

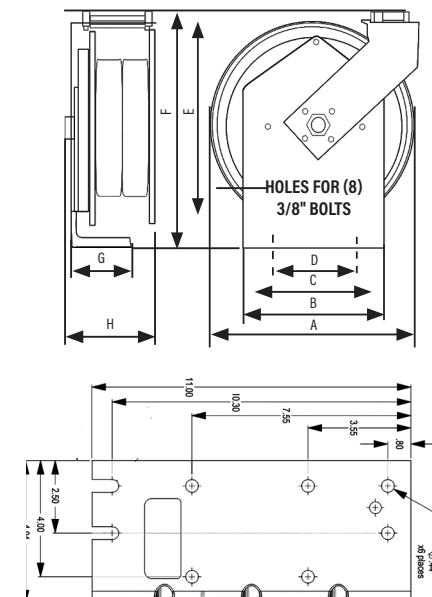
Standard color	Special color 2-week lead-time						Custom color 6-week lead time
Semi-gloss Black	Wt	Gr	Bl	Rd	Silver	Yl	
	-002	-003	-004	-005	-006	-007	based on specifications supplied by the customer

MODELS AVAILABLE	DESCRIPTION	REPLACEMENT HOSE
Air & Water Low Pressure 300 psi (21 bar) for delivery of air, water, anti-freeze and windshield wash***		
2120-016	Bare reel - up to 30' Hose	-
2120-017	Bare reel - up to 50' Hose	-
2120-008	30' x 1/2" ID hose	8241-030
2120-014	30' x 3/8" ID hose	8136-030
2120-005	40' x 3/8" ID hose	8136-040
2120-015	50' x 3/8" ID hose	8136-050
2120-021*	30' x 3/8" ID hose. No arm	8141-030
2120-020	50' x 1/2" ID hose	8141-050
2120-025	30' x 3/8" ID hose-Nitrogen	8135-030
2120-026	50' x 3/8" ID hose-Nitrogen	8135-050
Oil medium pressure 2,750 psi (190 bar) for delivery of lubricants		
2120-016	Bare reel - up to 30' Hose	-
2120-017	Bare reel - up to 50' Hose	-
2120-011	30' x 1/2" ID hose	8241-030
2120-012	40' x 1/2" ID hose	8241-040
2120-013	50' x 1/2" ID hose	8241-050
2120-022*	16' x 1/2" ID hose. No arm	8241-016
Grease High pressure 5,000 psi (345 bar) for delivery of grease		
2120-018	Bare reel - up to 30' Hose	-
2120-019	Bare reel - up to 50' Hose	-
2120-003	30' x 3/8" ID hose	-
2120-004	40' x 3/8" ID hose	8331-040
2120-007	50' x 3/8" ID hose	8331-050
2120-001	30' x 1/4" ID hose	8321-030
2120-002	40' x 1/4" ID hose	8321-040
2120-006	50' x 1/4" ID hose	8321-050
DEF (Diesel Exhaust Fluid) Low pressure 150 psi (10 bar) for delivery of DEF		
2400-006	Bare reel, up to 3' x 3/4" ID BSPP (F)	-
2400-007	16' x 3/4" ID BSPP (M)	8569-016
2400-008	20' x 3/4" ID BSPP (M)	8569-020
2400-009	30' x 3/4" ID BSPP (M)	8569-030

* Classic reel less outlet arm for workbench mounting

Dimensions inches (MM)							
A	B	C	D	E	F	G	H
16" (407 mm)	11" (280 mm)	9.5" (242mm)	4" (102 mm)	16" (407 mm)	20" (508 mm)	5" (127 mm)	6-8" (153-204mm)

TECHNICAL DATA	
Low & Medium Pressure Reels	
Fluid inlet port	1/2" NPT(F) swivel
Fluid outlet port	1/2" NPT(F) swivel
Hose outlet thread	1/4" NPT(M) for 3/8" ID Hoses
	1/2" NPT(M) for 1/2" ID Hoses
Wetted materials	Plated steel, Brass, bronze and Buna-N
High Pressure Reels	
Fluid inlet port	3/8" NPT(F) swivel
Fluid outlet port	3/8" NPT(F) swivel
Hose outlet thread	1/4" NPT(M) for 1/4" ID Hoses
	1/4" NPT(M) for 3/8" ID Hoses
Wetted materials	Plated steel, hardened steel and Buna-N
Service Bulletin	SB 2002 SB 2002-A (No arm reels)



Hose Reels Classic

Classic Hose Reel Description

This solid, all Steel hose reel is preferred for general duty, automotive dealerships, and service garages. Proven performance and reliable operation; all Classic series reels includes hose, hose stop and a 2.5' connecting hose.

Classic Hose Reel Specifications:

- 2.1. All Balcrank Classic reel will have a pinch free, four-way roller hose guide that reduces hose wear and allows for delivery hose to be tangent pulled from 360°
- 2.2. All Balcrank Classic reels will utilize a die cast Aluminum 8-position radial latch assembly for superior corrosion resistance and latching performance at desired hose length.
- 2.3. All Balcrank low and medium Classic hose reels will include a full port, pressure balanced, swivel that produces minimal pressure loss with a flow path surface made from bronze and pressure specific Brass shaft that provides excellent corrosion resistance and fluid compatibility.
- 2.4. All Balcrank Classic reels will have a de-clutching mechanism that eliminates the possibility of spring damage due to reverse winding of the spool.
- 2.5. All Balcrank Classic reels will utilize a stamped Steel power spring canister. The power spring lubricated canister is removable and provides safe and convenient maintenance of power spring.
- 2.6. All Balcrank Classic reels utilizes a power-spring made from fatigue resistant Steel that is enclosed in a lubricated spring canister to protect against the environment.
- 2.7. All Balcrank Classic reels will have a single unitized stamped heavy-gauge Steel pedestal that includes stiffening gussets for superior rigidity.
- 2.8. All Balcrank Classic reels will have a 7-position guide arm for multiple installation options; ceilings, walls, tanks, cabinets.
- 2.9. All Balcrank Classic reels components will be individually powder coated prior to assembly for corrosion resistance. Standard color is matte black, outlet hose guide is available in other colors upon request; gloss black, silver, green, red, blue, yellow, and white.
- 2.10. All Balcrank Classic reels will have a single-arm outlet design for easy hose replacement.
- 2.11. All Balcrank Classic reels will include hose, hose stop, and a 2.5' connecting hose.

Materials

- 3.1. The wetted materials will consist of plated Steel, Brass, bronze, and Buna-N™ for low and medium pressure
- 3.2. The wetted materials will consist of plated Steel, hardened Steel, and Buna-N™ for high pressure

Warranty

- 4.1. All Balcrank Classic will have a 1-year standard warranty on defects in materials and workmanship only.
- 4.2. The reel hoses will have a 1-year replacement only warranty (defects in materials and workmanship only).

Custom Reels

CUSTOM and SPECIAL color painted reels can add style to an installation and match OEM color schemes.

Custom colors are available on all Classic open and enclosed reels. Balcrank's STANDARD paint color for reels is semi-gloss black.

SPECIAL colors are available in: silver, green, red, blue, yellow, textured black, and white. All SPECIAL color reel orders require a minimum 2-week lead time.

CUSTOM colors are also available on open and enclosed Classic reels. Balcrank can match CUSTOM colors based on specifications supplied by the customer. All CUSTOM colors require a minimum 6-week lead time. Additional fees may apply.

Semi-Gloss	White	Green	Blue	Red	Silver	Yellow
-	-002	-003	-004	-005	-006	-007



**Air & Water
Anti-freeze
Windshield wash
Oil
Grease
DEF**

Premium Hose Reel for the toughest shop environments

Today's heavy-duty hose reel market demands an innovative use of components that provide long life, improved serviceability and superior structural design. Our Premium reel incorporates advanced design features that ensures long life in the toughest environments while reducing overall weight.

All Premium series reels have a narrow design; includes hose, hose stop and a 2.5' connecting hose.

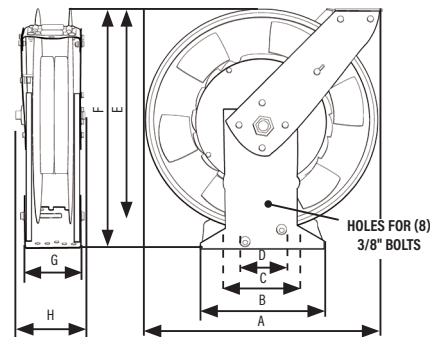
TECHNICAL DATA

Low & Medium Pressure Reels

Fluid inlet port	1/2" NPT(F) swivel
Fluid outlet port	1/2" NPT(F) swivel
Hose outlet thread	1/2" NPT(M) for 3/8" ID Hoses 1/2" NPT(M) for 1/2" ID Hoses
Wetted Materials	Low pressure - Brass, Acetal & Buna-N Med. pressure - Steel (plated) & Buna-N

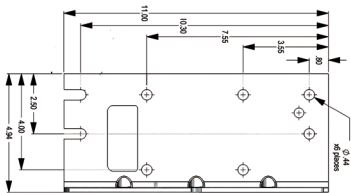
High Pressure Reels

Fluid inlet port	3/8" NPT(F) swivel
Fluid outlet port	3/8" NPT(F) swivel
Hose outlet thread	1/4" NPT(M) for 1/4" ID Hoses 1/4" NPT(M) for 3/8" ID Hoses
Wetted Materials	Nickel plated steel, hardened steel and Polyethylene
Wetted Materials	Hardened steel and Polyurethane
Service Bulletin	SB 2027



MODELS AVAILABLE	DESCRIPTION	REPLACEMENT HOSE
Air & Water Low Pressure 300 psi (21 bar) for delivery of air, water, anti-freeze and windshield wash**		
2111-048	Bare reel - up to 50' Hose	-
2111-049	Bare reel - up to 60' Hose	-
2111-031	30' x 3/8" ID hose	8136-030
2111-032	40' x 3/8" ID hose	8136-040
2111-033	50' x 3/8" ID hose	8136-050
2111-034	60' x 3/8" ID hose (50' + 10')*	8136-060
2111-035	40' x 1/2" ID hose	8141-040
2111-036	50' x 1/2" ID hose	8141-050
2111-037	60' x 1/2" ID hose (50' + 10')*	8141-060
Oil Medium Pressure 2,750 psi (190 bar) for delivery of lubricants		
2111-027	Bare reel - up to 50' Hose	-
2111-028	Bare reel - up to 60' Hose	-
2111-038	30' x 1/2" ID hose	8241-030
2111-039	40' x 1/2" ID hose	8241-040
2111-040	50' x 1/2" ID hose	8241-050
2111-041	60' x 1/2" ID hose (50' + 10')*	8241-060
Grease High-pressure 5,000 psi (345 bar) for delivery of grease		
2111-029	Bare reel - up to 50' Hose	-
2111-030	Bare reel - up to 60' Hose	-
2111-045	40' x 3/8" ID hose	8332-040
2111-046	50' x 3/8" ID hose	8332-050
2111-047	60' x 3/8" ID hose (50' + 10')*	8332-060
2111-042	40' x 1/4" ID hose	8323-040
2111-043	50' x 1/4" ID hose	8323-050
2111-044	60' x 1/4" ID hose (50' + 10')*	8323-060

* 50' on spool with 10' hanging



Dimensions inches (MM)			
A	B	C	D
20.5" (521 mm)	11" (280 mm)	9 1/2" (242 mm)	4" (102 mm)
E	F	G	H
20.25" (515 mm)	21.5" (547 mm)	5.5" (140 mm)	6.75" (172 mm)

Hose Reels

Premium

Premium Hose Reel Description

Today's heavy-duty hose reel market demands an innovative use of components that provide long life, improved serviceability and superior structural design.

Our Premium reel incorporates advanced design features that ensures long life in the toughest environments while reducing overall weight.

All Premium series reels have a narrow design; includes hose, hose stop and a 2.5' connecting hose.

Premium Hose Reel Specifications:

- 2.1. All Balcrank Premium reels will have a pinch free, four-way roller hose guide that reduces hose wear and allows for delivery hose to be tangent pulled from 360°.
- 2.2. All Balcrank Premium reels will utilize a 10-position heavy-duty cast latch mechanism for secure hose lock performance at desired hose length.
- 2.3. All Balcrank Premium hose reels will include a full port, pressure balanced, swivel that produces minimal pressure loss with a flow path surface that is Nickel plated to provide excellent corrosion resistance and fluids compatibility.
- 2.4. All Balcrank Premium reels will incorporate a de-clutching mechanism that eliminates the possibility of spring damage due to reverse winding of spool.
- 2.5. All Balcrank Premium reels will have a heavy-gauge Steel twin pedestal and hose guide assembly for superior rigidity and increased strength for extreme-duty applications.
- 2.6. All Balcrank Premium reels will utilize a power-spring made from fatigue resistant Steel that is enclosed in a lubricated spring canister to protect against the environment.
- 2.7. All Balcrank Premium hose reels will have a 7-position twin guide arm for multiple installation options; ceiling, wall, floor, tank, cabinet, or mobile lube applications.
- 2.8. All Balcrank Premium reels will have dual spool mount sealed ball bearings that reduce power spring fatigue, wear, and facilitates a smooth and balanced operation during delivery hose extension and retraction.
- 2.9. All Balcrank Premium reels components will be individually powder coated prior to assembly for corrosion resistance.
- 2.10. All Balcrank Premium reels will include hose, hose stop, and a 2.5' connecting hose.

Materials

- 3.1. The wetted materials will consist of Brass, Acetal & Buna-N™ for low pressure
- 3.2. The wetted materials will consist of Steel (plated) & Buna-N™ for medium pressure
- 3.3. The wetted materials will consist of Nickel plated Steel, hardened Steel, and Polyethylene for high pressure

Warranty

- 4.1. All Balcrank Premium will have a 1-year standard warranty on defects in materials and workmanship only.
- 4.2. The reel hoses will have a 1-year replacement only warranty (defects in materials and workmanship only).

Hose Reels Extended Volume (EV)

**Air & Water
Anti-freeze
Oil
Grease
Diesel
DEF**

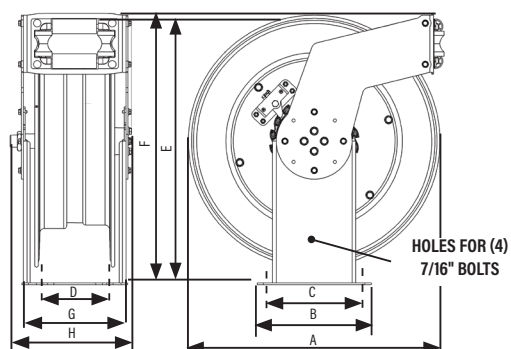
The Extended Volume, EV Series hose reels are designed for high volume heavy-duty applications where large hose diameters are required for increased flow. The EV reels will accommodate up to 50' of 3/4" ID hose or 65' of 1/2" ID hose. Perfect for heavy-duty fleet, construction, mining and industrial applications.

All EV series reels include hose, hose stop and a 2.5' connecting hose.

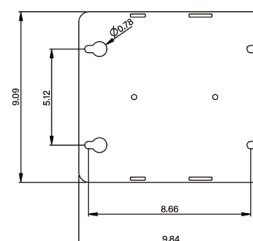


MODELS AVAILABLE	DESCRIPTION	REPLACEMENT HOSE
Air & Water Low Pressure 300 psi (21 bar) for delivery of air, water and anti-freeze		
2310-033	Bare reel - up to 65' x 1/2" or 50' x 3/4"	-
2310-027	65' x 1/2" ID hose	8141-065
2310-028	50' x 3/4" ID hose	8161-050
Oil Medium Pressure for delivery of lubricants		
2310-033	Bare reel - up to 65' x 1/2" or 50' x 3/4"	-
2310-031	50' x 3/4" ID hose 1,950 psi (135 bar)	8264-050
2310-029	65' x 1/2" ID hose 2,750 psi (190 bar)	8250-065
Grease High pressure 5,000 psi (345 bar) for delivery of grease		
2310-048	Bare reel - up to 65' x 3/8"	-
2310-046	65' x 3/8" ID hose	8332-065
Diesel Low Pressure 50 psi (3 bar) for delivery of diesel		
2310-033	Bare reel - up to 65' x 1/2" or 50' x 3/4"	-
2310-032	50' x 3/4" ID hose	8466-050
Diesel Exhaust Fluid Low Pressure 150 psi (10 bar) for delivery of diesel exhaust fluid		
2400-010	Bare reel - up to 65' x 1/2" or 50' x 3/4"	-
2400-011	50' x 3/4" ID hose	8569-050

TECHNICAL DATA	
Diesel, Low & Medium Pressure Reels	
Fluid inlet port	3/4" NPT(F) swivel
Fluid outlet port	3/4" NPT(F) swivel
Hose outlet thread	1/2" NPT(M) for 1/2" ID Hoses
	3/4" NPT(M) for 3/4" ID Hoses
Wetted Materials	Nickel plated steel and Buna-N
Service Bulletin	SB 2028
Low Pressure DEF Reels	
Fluid inlet port	3/4" BSPP(F) swivel
Fluid outlet port	3/4" BSPP(F) swivel
Hose outlet thread	3/4" BSPP (M) for 3/4" ID Hoses
Wetted Materials	Stainless Steel, Polypropylene, & Viton®
Service Bulletin	SB 2028
High Pressure Reels	
Fluid inlet port	3/8" NPT(F) swivel
Fluid outlet port	3/8" NPT(F) swivel
Hose outlet thread	1/4" NPT(M) for 3/8" ID Hoses
Wetted Materials	Nickel Plated Steel, Hardened steel and Polyurethane
Service Bulletin	SB 2028



Dimensions inches (MM)			
A	B	C	D
22" (559 mm)	8.62" (219 mm)	5" (127 mm)	5.12" (131 mm)
E	F	G	H
22" (599 mm)	23.5" (597 mm)	9" (229 mm)	9.25" (235 mm)



Hose Reels

Extended Volume (EV)

EV Hose Reel Description

The Extended Volume, EV Series hose reels are designed for high volume heavy-duty applications where large hose diameters are required for increased flow. The EV reels will accommodate up to 50' of 3/4" ID hose or 65' of 1/2" ID hose. Perfect for heavy-duty fleet, construction, mining and industrial applications. All EV series reels include hose, hose stop and a 2.5' connecting hose.

EV Hose Reel Specifications:

- 2.1. All Balcrank EV reels will have a pinch free, four-way roller hose guide that reduces hose wear and allows for delivery hose to be tangent pulled from 360°
- 2.2. All Balcrank EV reels will have a heavy-gauge Steel twin pedestal and hose guide assembly for superior rigidity and increased strength for extreme-duty applications.
- 2.3. All Balcrank EV reels will have capacity to handle a maximum of 100 ft. of hose, depending on fluid application and hose diameter.
- 2.4. All Balcrank EV reels will include hose, hose stop, and a 2.5' connecting hose.
- 2.5. All Balcrank EV reels will utilize a power-spring made from fatigue resistant Steel that is enclosed in a lubricated spring canister to protect against the environment.
- 2.6. All Balcrank EV hose reels will have a 7-position twin guide arm for multiple installation options; ceiling, wall, floor, tank, cabinet, or mobile lube applications.
- 2.7. All Balcrank EV hose reels will include a full port, pressure balanced, swivel that produces minimal pressure loss with a flow path surface that is Nickel plated to provide excellent corrosion resistance and fluids compatibility.
- 2.8. All Balcrank EV reels will utilize a 10-position heavy-duty cast latch mechanism for secure hose lock performance at desired hose length.
- 2.9. All Balcrank EV reels will have a dual spool mount sealed ball bearings that reduce power spring fatigue, wear, and facilitates a smooth, and balanced operation during delivery hose extension and retraction.
- 2.10. All Balcrank EV reel components will be individually powder coated prior to assembly for corrosion resistance.
- 2.11. All Balcrank EV reels will incorporate a de-clutching mechanism that eliminates the possibility of spring damage due to reverse winding of spool.

Materials

- 3.1. The wetted materials will consist of Nickel plated steel and Buna-N™ for diesel, low and medium pressure reels
- 3.2. The wetted materials will consist of Stainless Steel, Polypropylene, & Viton® on low pressure DEF reels
- 3.3. The wetted materials will consist of Nickel Plated Steel, Hardened steel and Polyurethane high pressure reels

Warranty

- 4.1. All Balcrank EV reels will have a 1-year standard warranty defects in materials and workmanship .
- 4.2. The reel hoses will have a 1-year replacement only warranty (defects in materials and workmanship only).
- 4.3. Excludes all DEF packages & components, these carry a 1-year standard warranty.

Hose Reels Extended Volume Extra (EVX)



Air & Water Anti-freeze Oil Diesel Evacuation

The Extended Volume, EVX Series hose reels are designed for high volume heavy-duty applications where large hose diameters are required for increased flow. The EVX reels will accommodate up to 50' of 1" ID hose or 100' of 1/2" ID hose. Perfect for heavy-duty fleet, construction, mining and industrial applications.

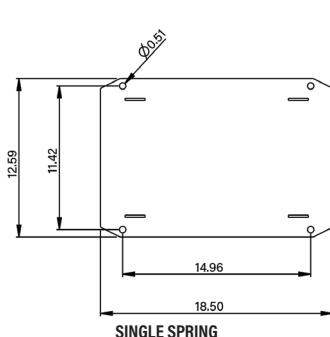
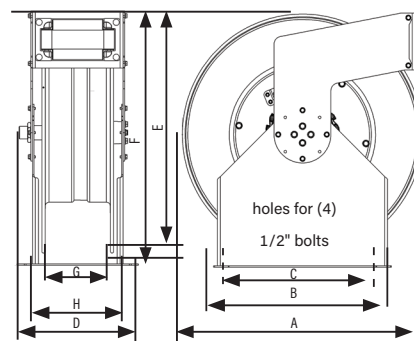
All EVX series reels include hose, hose stop and a 2.5' connecting hose.

MODELS AVAILABLE	DESCRIPTION	REPLACEMENT HOSE
Air & Water Low Pressure 300 psi (21 bar) for delivery of air, water and anti-freeze		
2310-034	Bare reel, 50' x 1" ID hose or 75' x 1/2" ID hose	-
2310-035**	Bare reel, 75' x 3/4" ID hose or 100' x 1/2" ID hose	-
2310-036**	75' x 1/2" ID hose	8141-075
2310-037**	100' x 1/2" ID hose	8141-100
2310-038**	75' x 3/4" ID hose	8161-075
2310-039	50' x 1" ID hose	8181-050
Oil Medium Pressure 1,525 psi (105 bar) & 2,320 (160 bar) for delivery of lubricants		
2310-035**	Bare reel, 75' x 3/4" ID hose or 100' x 1/2" ID hose	-
2310-045**	50' x 1" ID hose 1,500 psi	8281-050
2310-041**	75' x 3/4" ID hose 1,525 psi	8264-075
2310-040**	100' x 1/2" ID hose 2,320 psi	8250-100
2310-049**	75' x 1/2" ID hose	-
Diesel & Evacuation Low Pressure 50 psi (3 bar) for delivery of diesel fuel and used oil evacuation*		
2310-034	Bare reel, 50' x 1" ID hose or 75' x 1/2" ID hose	-
2310-043	50' x 1" ID hose Diesel	8481-050
2310-042	50' x 1" ID hose Evacuation	8181-050
2310-050	30' x 1" ID hose Evacuation	8281-050

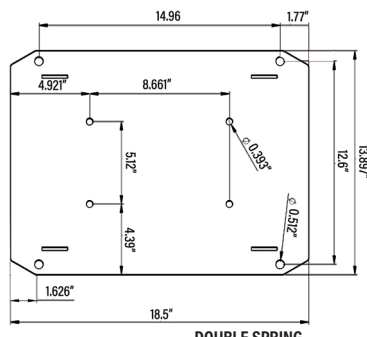
* Verify that system design supports the use of an evacuation reel.

** Double spring reel

TECHNICAL DATA	
Low & Medium Pressure Reels	
Fluid inlet port	1" NPT(F) swivel
Fluid outlet port	1" NPT(F) swivel
Hose outlet thread	1/2" NPT(M) for 1/2" ID Hoses
	3/4" NPT(M) for 3/4" ID Hoses
	1" NPT(M) for 1" ID Hoses
Wetted Materials	Nickel plated steel and Buna-N™
Service Bulletin	SB 2029



SINGLE SPRING



DOUBLE SPRING

Single Spring Dimensions inches (MM)							
A	B	C	D	E	F	G	H
25" (635 mm)	18.5" (470 mm)	15" (381 mm)	12.6" (321 mm)	25" (635 mm)	26.5" (674 mm)	7" (178 mm)	11.4" (290 mm)

Double Spring Dimensions inches (MM)							
A	B	C	D	E	F	G	H
25" (635 mm)	18.5" (470 mm)	15" (381 mm)	13.9" (354 mm)	25" (635 mm)	26.5" (674 mm)	8.5" (216 mm)	12.6" (321 mm)

Hose Reels

Extended Volume Extra (EVX)

EVX Hose Reel Description

The Balcrank EVX Series hose reels are designed for high volume, heavy-duty applications where large hose diameters are required for increased flow. EVX reel is ideal for heavy-duty fleet, construction, mining, aviation, and industrial applications.

All EVX series reels include hose, hose stop and a 2.5' connecting hose.

EVX Hose Reel Specifications:

- 2.1. All Balcrank EVX reels will have a pinch free, four-way roller hose guide that reduces hose wear and allows for delivery hose to be tangent pulled from 360°
- 2.2. All Balcrank EVX reels will have a heavy-gauge Steel twin pedestal and hose guide assembly for superior rigidity and increased strength for extreme-duty applications.
- 2.3. All Balcrank EVX reels will have capacity to handle a maximum of 100 ft. of hose, depending on fluid application and hose diameter.
- 2.4. All Balcrank EVX reels will include hose, hose stop, and a 2.5' connecting hose.
- 2.5. All Balcrank EVX reels will utilize a power-spring made from fatigue resistant Steel that is enclosed in a lubricated spring canister to protect against the environment.
- 2.6. All Balcrank EVX hose reels will have a 7-position twin guide arm for multiple installation options; ceiling, wall, floor, tank, cabinet, or mobile lube applications.
- 2.7. All Balcrank EVX hose reels will include a full port, pressure balanced, swivel that produces minimal pressure loss with a flow path surface that is Nickel plated to provide excellent corrosion resistance and fluids compatibility.
- 2.8. All Balcrank EVX reels will utilize a 10-position heavy-duty cast latch mechanism for secure hose lock performance at desired hose length.
- 2.9. All Balcrank EVX reels will have a dual spool mount sealed ball bearings that reduce power spring fatigue, wear, and facilitates a smooth, and balanced operation during delivery hose extension and retraction.
- 2.10. All Balcrank EVX reel components will be individually powder coated prior to assembly for corrosion resistance.
- 2.11. All Balcrank EVX reels will incorporate a de-clutching mechanism that eliminates the possibility of spring damage due to reverse winding of spool.

Materials

- 3.1. The wetted materials will consist of Nickel-plated Steel and Buna-N™.

Warranty

- 4.1. The EVX Hose reel will have a 1-year standard warranty on defects in materials and workmanship only.
- 4.2. The reel hoses will have a 1-year replacement only warranty (defects in materials and workmanship only).

Hose Reels

Extended Volume+ (EVX+)

Air & Water Anti-freeze Diesel



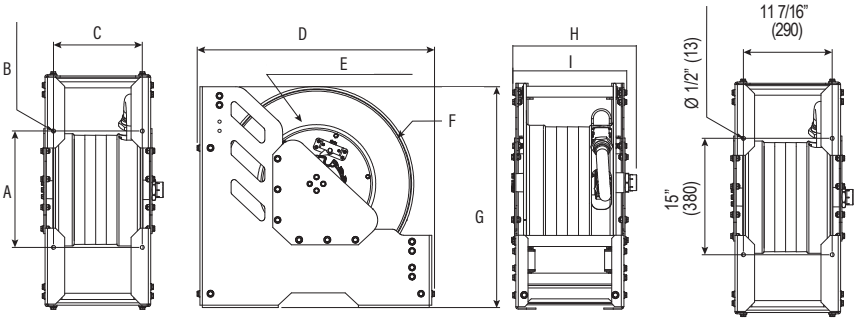
The Extended Volume+, EVX+ Series hose reel is designed for extreme heavy-duty applications where large hose diameters are required for increased flow. The dual spring EVX+ reel will accommodate up to 50' of 1 1/2" ID hose. Perfect for heavy-duty fleet, construction, mining and industrial applications.

Hose not included

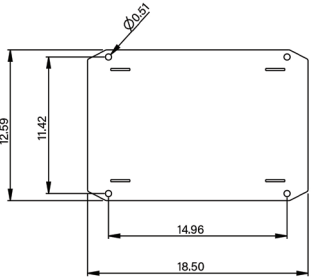
Hose Reels

MODELS AVAILABLE	DESCRIPTION	REPLACEMENT HOSE
Air, Water, Diesel & Low Pressure Oil Transfer 580 psi (21 bar) for delivery of air, water, diesel & oil transfer		
2310-047	Bare reel - up to 50' x 1 1/2"	-
2310-029	Bare reel - up to 75' x 1 1/2"	-

TECHNICAL DATA	
Diesel, Low Pressure Reels	
Fluid inlet port	1 1/2" NPT(F) swivel
Fluid outlet port	1 1/2" NPT(F) swivel
Hose outlet thread	1 1/2" NPT(M) for 1 1/2" ID Hoses
Wetted Materials	Steel, nickel plated steel, Nitrile rubber, nickel plated aluminum
Service Bulletin	SB 2038



Dimensions inches (MM)								
A	B	C	D	E	F	G	H	I
15" (381 mm)	0.5" (13 mm)	11.43" (291 mm)	30.5" (775 mm)	14.37" (365 mm)	25" (635 mm)	28.25" (718 mm)	15.5" (394 mm)	14.25" (362 mm)



Hose Reels

Extended Volume+ (EVX+)

EVX+ Hose Reel Description

The **Extended Volume+, EVX+ Series hose reel** is designed for **extreme heavy-duty applications** where large hose diameters are required for increased flow. The dual spring EVX+ reel will accommodate up to 50' of 1 1/2" hose. Perfect for heavy-duty fleet, construction, mining and industrial applications.

EVX Hose Reel Specifications:

- 2.1. All Balcrank EVX+ reels will have a pinch free, four-way roller hose guide that reduces hose wear and allows for delivery hose to be tangent pulled from 360°
- 2.2. All Balcrank EVX+ reels will have a heavy-gauge steel twin pedestal and hose guide assembly for superior rigidity and increased strength for extreme-duty applications.
- 2.3. All Balcrank EVX+ reels will have capacity to handle a maximum of 50 ft. of hose, depending on fluid application and hose diameter.
- 2.4. All Balcrank EVX+ reels will utilize a power-spring made from fatigue resistant steel that is enclosed in a lubricated spring canister to protect against the environment.
- 2.5. All Balcrank EVX+ hose reels will include a full port, pressure balanced, swivel that produces minimal pressure loss with a flow path surface that is nickel plated to provide excellent corrosion resistance and fluids compatibility.
- 2.6. All Balcrank EVX+ reels will utilize a 10-position heavy-duty cast latch mechanism for secure hose lock performance at desired hose length.
- 2.7. All Balcrank EVX+ reels will have a dual spool mount sealed ball bearings that reduce power spring fatigue, wear, and facilitates a smooth, and balanced operation during delivery hose extension and retraction.
- 2.8. All Balcrank EVX+ frame and spool components will be individually powder coated prior to assembly for corrosion resistance.
- 2.9. All Balcrank EVX+ reels will incorporate a de-clutching mechanism that eliminates the possibility of spring damage due to reverse winding of spool.
- 2.10. All Balcrank EVX+ reels will not include hose.

Materials

- 3.1. The wetted materials will consist of Steel, Nickel-plated Steel, Nitrile rubber, Nickel-plated aluminum.

Warranty

- 4.1. The EVX+ Hose reel will have a 1-year standard warranty on defects in materials and workmanship only.
- 4.2. The reel hoses will have a 1-year replacement only warranty (defects in materials and workmanship only).

Enclosed Hose Reels

All metal enclosed cabinet hose reels are designed to improve the appearance of any shop. Standard color is black and six special colors are available to match workbenches, and automotive lifts.

CHOOSE YOUR REEL

MODELS AVAILABLE	DESCRIPTION
Air & Water Low Pressure 300 psi (21 bar) for delivery of air, water and anti-freeze	
2251-338	30' x 3/8" ID hose
2251-538	50' x 3/8" ID hose
2251-312	30' x 1/2" ID hose
2251-512	50' x 1/2" ID hose
Oil Medium Pressure 3,000 psi (207 bar) for delivery of lubricants	
2252-312	30' x 1/2" ID hose
2252-512	50' x 1/2" ID hose
Grease High-pressure 4,000 (276 bar) for delivery of grease	
2253-314	30' x 1/4" ID hose
2253-538	50' x 3/8" ID hose



ADD A LIGHT OR ELECTRIC REEL

MODELS AVAILABLE	DESCRIPTION
2254-518	Light Cord Reel & Bracket 50' x 18 gauge
2254-518D	Dual Light - 2 Light Cord Reels & Bracket - fits 1 single enclosure 50' x 18 gauge
2254-316	Electric Cord Reel & Bracket 30' x 10 amps, 3 outlet
2254-316D	Dual cord reel & bracket 30' x 10 amp, 3 outlet



2254-316



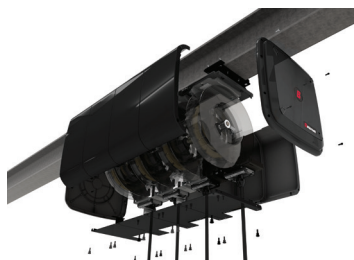
2254-518D

CHOOSE YOUR SIDE ENCLOSURE

Order 1 side enclosure kit per reel

Side enclosure kits include: 2 side panels, 1 roller outlet assembly, 1 quick mounting plate, and hardware

MODELS AVAILABLE	DESCRIPTION
2250-011	Kit, side enclosure black semi-gloss
2250-012	Kit, side enclosure white
2250-013	Kit, side enclosure green
2250-014	Kit, side enclosure blue
2250-015	Kit, side enclosure red
2250-016	Kit, side enclosure silver
2250-017	Kit, side enclosure yellow



CHOOSE YOUR END PANEL KIT

Order 1 end panel kit per reel bank

End panel kits include: 2 end panels, 2 poly end panel inserts, 1 end bar support, and hardware.

End Panel insert standard color is black. To order a white insert add a "W" to the model number, listed below.

example - 2250-003W = kit, end panels green with white end panel insert.

MODELS AVAILABLE	DESCRIPTION
2250-001	Kit, end panels black semi-gloss
2250-002	Kit, end panels white
2250-003	Kit, end panels green
2250-004	Kit, end panels blue
2250-005	Kit, end panels red
2250-006	Kit, end panels silver
2250-007	Kit, end panels yellow



Air & Water Anti-freeze Windshield wash Oil Grease

Balcrank recommends using mounting channels or framing strut for installation of these enclosures.

- All steel cabinets have high quality, powder coated finish providing corrosion resistance
- Cabinet design provides smooth and easy operation: prevents hose pinch and reduces wear when pulling from any angle
- Simple installation and serviceability
- Cabinet design ties all reels in the bank together to form one complete rigid structure
- Aluminum end panels with removable poly inserts provide fast and easy serviceability

Channels are designed to build a bank of reels

- When mounting directly to an I-Beam, use Mounting Channel I-Beam Bracket Kit #2230-002 to mount channel to a structural I-Beam.

Enclosed hose reels not recommended for wall-mounting

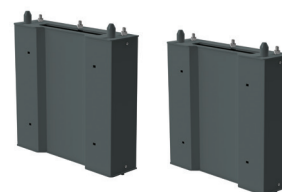
MODELS	DESCRIPTION
2230-003	Mounting Channel - 1 Reel
2230-004	Mounting Channel - 2 Reel
2230-005	Mounting Channel - 3 Reel
2230-007	Mounting Channel - 5 Reel
2230-002	Mounting Channel I-Beam Bracket Kit. Use two bracket kits for 2 or 3 reels. Use 3 brackets for 5 or 6 reels.



Hose reel stands

Heavy duty solid steel stands offer an alternative to ceiling or wall mounting hose reels. All stands include mounting plates, gray finish and drip trays to keep unwanted oil off the floor. Available in 3, 5 and 6 reel models. Designed to fit the Evolution, Classic, and Premium Signature series hose reels.

MODELS AVAILABLE	DESCRIPTION
2230-027	3 reel hose stand. Dimensions: 47 x 15.5 x 87.5 inches.
2230-028	5 reel hose stand. Dimensions: 68.9 x 15.75 x 86.6 inches.
2230-029	6 reel hose stand. Dimensions: 78 x 30 x 103 inches.



2230-030

Hose reel stand options

Accessories are available for use with the six reel stand 2230-029 only. Height extension kits increase the stand height by another 20" and expansion brackets allow for an additional 2-4 reels (2 on each side) to be mounted with a total of 10 possible hose reels. Drip tray keeps unwanted fluids off the floor.

MODELS AVAILABLE	DESCRIPTION
2230-030	Height extension kit Adds 20" additional height. Sold in pairs
2230-031	Expansion bracket Allows 2 additional reels to be mounted on each side of the hose reel stand
2230-035	Drip Tray for use with expansion bracket 2230-031. Purchase one per Expansion bracket

for large quantities check lead times with your Balcrank Representative.

